



The City is Burning!!!

EMS Response to Civil Unrest

Gregg A. Jones, MD

Immediate EMS Response

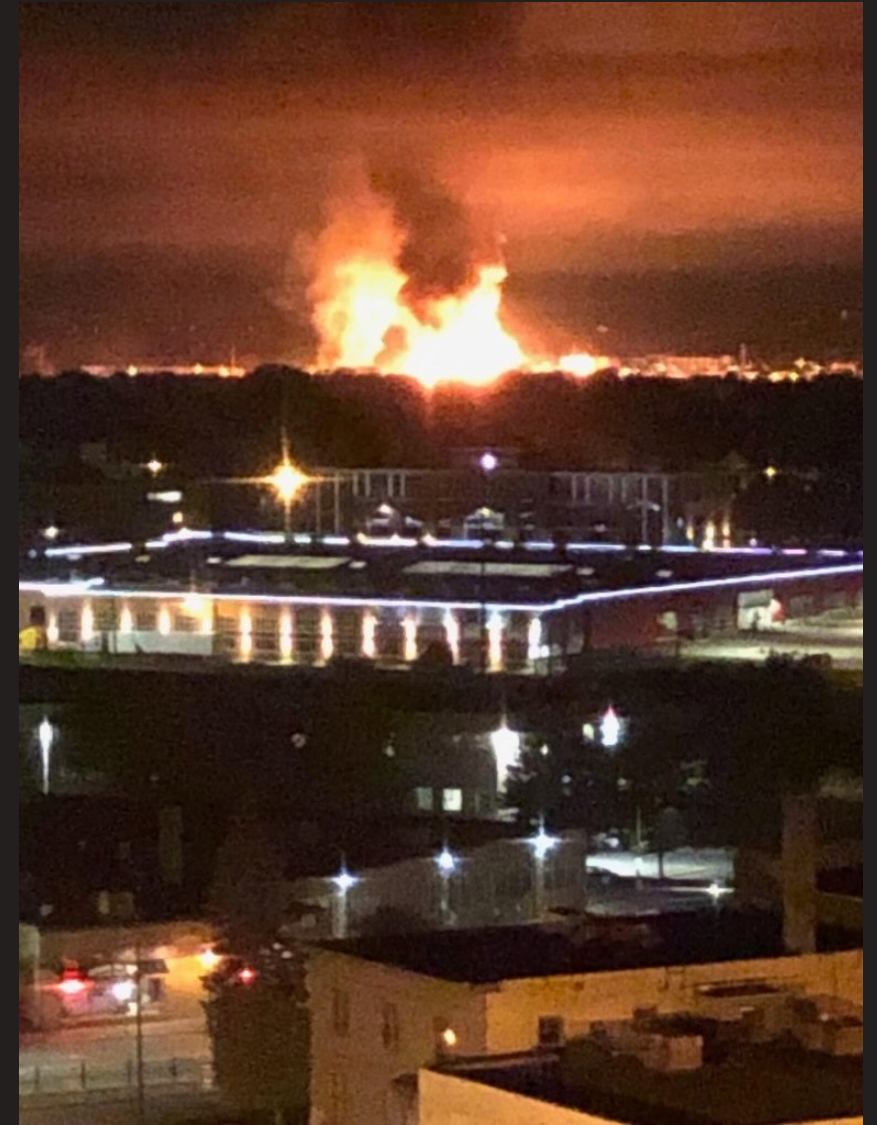
1. Embedded medics with MPD Mobile Field Force

Building Damage

More than 1,500 buildings damaged

At least 67 buildings completely destroyed

More than 100 structure fires



EMS Response

1. Embedded medics with MPD Mobile Field Force
2. Strike Team (QRT Quick Response Teams):
 - Consists of Command Vehicle (EMS Chief and EMS Physician)
 - and
 - Two Ambulances (2 Paramedics per Ambulance)

EMS Response: Strike Teams/QRT

Ambulance

Ambulance

**Command
Vehicle**

EMS Response

Embedded Paramedics with LE Mobile Field Force

Provide care for injury officers and civilians

Rapidly communicate issues and injuries with command



EMS Dispatch: Dedicated dispatcher for Strike teams/QRT and embedded paramedics.

EMS Response

EMS Ambulance Security:

Initially provided by Law Enforcement officers from outside of Minneapolis in command vehicles

EMS Command Advocacy for National Guard

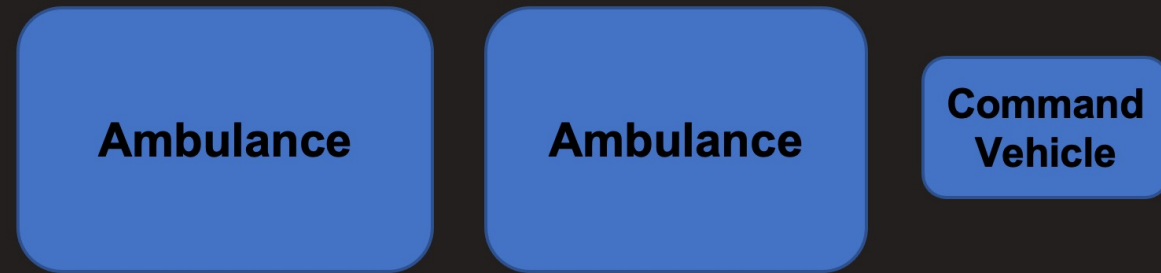
EMS Response: National Guard

EMS Security:

Now provided by soldiers from the MN National Guard

Each Ambulance assigned two soldiers

Each Command Vehicle assigned National Guard Command element
(Sergeant &/or Captain)



Each Strike Team: 5-6 soldiers

End of May to Early June...

Majority of civil unrest ceased
MN National Guard demobilized
EMS Operations returned to “normal”

But, what about the trial...

Operation Safety Net

Preparing for potential outcomes of Chauvin verdict

- Training and embedding Medics with LEO/Mobile Field Force
- QRT deployment with command staff, MD, and 2 National Guard tied to ambulance
- National Guard protection on every EMS rig and QRT
- Nationwide staffing shortages in EMS, did our best to up-staff

Operation Safety Net

EMS Training with Law Enforcement Partners:

Hennepin Technical Rescue Paramedics trained for months in Law Enforcement procedures to embed with Mobile Field Force.

This gave us the ability to initiate care for LEOs, protestors, and innocent bystanders, as well as coordinate ingress/egress of our Quick Response Teams.



Hennepin Safety Contingency Planning

- Off site parking with shuttles due to threats to staff
- Boarded up Hospital and EMS with fencing and jersey barriers with LEO and National Guard protection
- Logistics for food and hydration for staff and National Guard
- State resources coordinated through MESB to have additional ambulance strike teams to backfill PSA
- Off site cache of supplies if unable to access quarters
- Daily info sharing sessions with rural and suburban first responders
- Purchased and upped our stock of STB supplies-pushed into Operations
- Developed Hennepin EMS Special Response Team (SRT)

Brooklyn Center

April 11th, 2021



Brooklyn Center

April 11th, 2021: Officer Involved shooting



Brooklyn Center

Brooklyn Center is in a different EMS agency's PSA
Hennepin EMS was already prepared for civil unrest with
upcoming Chauvin trial results.

Mobilized QRTs to Brooklyn Center to provide medical care.

Ambulance

Ambulance

**Command
Vehicle**

Anticipation & Preparation for the Hospital

- Anticipation of carnage
- Involve administration early
- Attitude is Contagious
 - Control rumors
- Clearing ED beds:
 - Inpatients to their beds upstairs/hallways
 - Emptying triage

Hospital Security

- Protests near the hospital
- Security issues:
 - Patients dropped off at triage?
 - Barricade doors
- Are patients safe to leave?

Information sources:

- Dispatch
- EMS radio
- map.snapchat.com





Linda Tirado, a freelance photographer, was shot in the eye on Friday while covering protests in Minneapolis. Linda Tirado

Injuries:
Eyes
Pepper spray
Assaults
GSWs

LESSONS LEARNED

- All EMS crew needs helmets (ballistic for embedded medics)
- Body armor mandatory for embedded medics and QRF
- EMS needs more training on riot control agents and treatments
- The Strike team/QRT response was important, heavy response for crew safety
- EMS must be involved in planning and as part of Unified Command
- Advocating for National Guard element to support EMS
- Valuable to have specialized paramedics for QRT and embedded medics – development of SRT
- Develop relationships with fellow public safety agencies now, not when large events occur...it's too late

FOLLOW-UP

Following events like these, it is increasingly important to remember the mental health of your team and department. Have contingency plans for access to care.

Consider for National Guard

Consider for supporting agencies

Definitely consider for your family at home

With more trials on the horizon...